

FROM

\$460 /NIGHT

Beachfront Beauty

Moonta Bay



Sleeps: 10



Bedrooms: 4



Bathrooms: 3

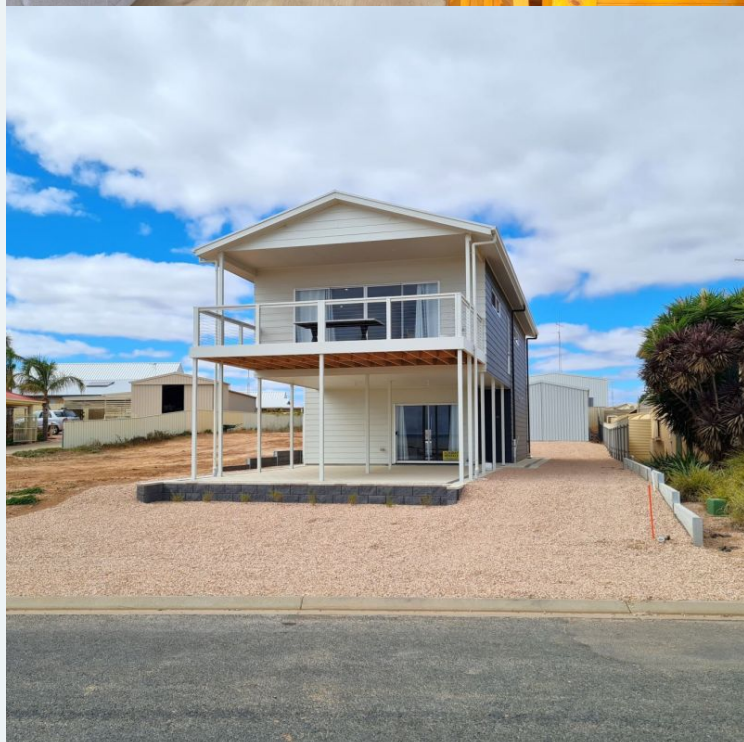


Parking spots: 3

Features:

- 1 king sized bed
- 1 queen sized bed
- 2 bunk beds
- 2 single beds
- Airconditioning
- Dishwasher
- DVD player
- Ensuite bathroom
- Group stays (10+)
- TV
- Washing Machine
- Boat parking
- Linen hire available
- Beachfront
- Bath
- Fish cleaning facilities
- Stairgate
- Seaviews

Book online now



* Price and property details correct as at 26/01/2026 and subject to change.

Beachfront Beauty, Moonta Bay

Book online now



Overview

Beachfront Beauty is a 2-storey beachfront holiday house at Moonta Bay, offering stunning 180-degree coastal views from Moonta Bay jetty to the south and to Bird Island Conservation Park in the north.

With 4 bedrooms – king, queen, bunk and trundle, bunk and trundle – Beachfront Beauty sleeps up to 10 people (maximum 6 adults). Quilts and pillows are provided, but guests will need to bring their linen (sheets, pillowcases, towels, bathmats & tea-towels) with them for their stay, or linen can be hired through the Country Getaways office.

The accommodation has 3 bathrooms throughout, with 2 on the upper level and 1 on the ground floor. The master king bedroom upstairs has an ensuite bathroom with walk-in shower, vanity and toilet; and the main 3-way bathroom has a walk-in shower, bath, vanity and toilet. Downstairs, the bathroom has a walk-in shower, vanity and toilet.

The upstairs bedrooms have pedestal fans, with a reverse cycle air-conditioner in the living area; and the downstairs lounge room has reverse cycle split system air-conditioning.

The upstairs living area is spacious with the kitchen, dining area and lounge room, and access to the balcony with outdoor dining and

uninterrupted beach views.

Beachfront Beauty has a large wall-mounted smart television in the upstairs lounge room, with board games stored in the coffee table for guests to enjoy during their stay.

The kitchen is fully equipped with an electric oven and cooktop, microwave, dishwasher, and large fridge with freezer on the bottom. There is bar stool seating at the kitchen counter, with an adjacent large dining table.

The downstairs lounge room has sofa seating, with a large television, DVD player (via PlayStation), DVDs and PlayStation 3 console with games.

Laundry facilities at the holiday house include a front load washing machine, clotheshorse and rotary clothesline at the rear.

Guests staying at Beachfront Beauty have access to a hooded gas barbecue, located on the rear patio, and for those coming to fish, there are fish cleaning facilities next to the shed at in the backyard.

There is off-street driveway parking for up to 3 cars, with room for a boat in the unfenced yard.

From the holiday house, the beach access path is across the road, or it's a short walk south to the foreshore precinct with the Moonta Bay jetty and Splash Town water park (open seasonally).

Moonta is less than 5 minutes' drive from Beachfront Beauty, with a range of shopping options including supermarket, hardware store, chemist, boutique stores and much more.

Port Hughes, Moonta Bay & Moonta offers a great selection of meal choices with a range of cafes, hotels & restaurants in all 3 locations.

* Price and property details correct as at 26/01/2026 and subject to change.